



YOU HAVE HELPED GET US THROUGH

YES is here to help youth and families experiencing homelessness in Peterborough City and County. **But we wouldn't be here, if it weren't for your help this year.**

The impact of COVID 19 has been profound.

- ✓ **Significantly higher mental health crisis amongst youth and families across all programs**
- ✓ **The inaccessibility of community services our clients need**
- ✓ **Isolation severely impacting young people in our RISE Youth Housing Program**
- ✓ **Widespread staff burnout across the organization**
- ✓ **Ongoing threat of outbreak in shelter**

BECAUSE OF YOU, YES HAS...

- ✓ **Held group programs to connect youth with one another and spark joy**
- ✓ **Continued helping youth and families find safety and stable housing**
- ✓ **Connected young people with vaccines and health-care**
- ✓ **Trained staff to handle new challenges**
- ✓ **Supported staff wellness**
- ✓ **Kept our space safe**



Thank
You!

(OVER)



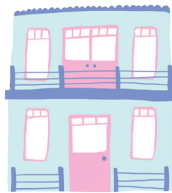
TOGETHER IN 2021, WE HELPED...



Worked with **50** young people to avoid homelessness



Supported **46** youth to exit homelessness in our RISE Youth Housing Program



Helped **106** youth and families find and move into housing of their own



Provided **14,566** meals to young people and families needing a nourishing meal



Kept **120** youth and families safe in Emergency Shelter



WHAT'S NEXT IN 2022...

- ✓ We just opened the Emergency Shelter up to full capacity **for the first time in 2 years.**
- ✓ YES is further expanding our RISE Youth Housing Program to include spots for at least 4 more young people.
- ✓ YES continues to work with local partners to provide **Indigenous RISE**; culturally appropriate supported housing for Indigenous youth who would otherwise be homeless
- ✓ We will continue to focus on **staff well-being**, and ensure everyone working at YES is earning a living-wage.
- ✓ **Over the last 10 years, the shelter has fallen into a state of bad repair.** In 2022, we want to raise the money needed to fix the plumbing, the structural issues, and brighten it up with some paint and landscaping.

TO HELP

Contact us at info@yesshelter.ca or donate at www.yesshelter.ca